



the secret public

CHANDON

MRS MRS

CIVIC HALL



UPPERMILL
CIVIC HALL

INTRODUCTION

LOCATED IN THE HEART OF THE STUNNING SADDLEWORTH COUNTRYSIDE IN THE CENTRE OF UPPERMILL, THE CIVIC HALL, BUILT IN 1859 AND RECENTLY RENOVATED THROUGHOUT, IS THE AREA'S NUMBER ONE EVENTS CENTRE.

It is the perfect venue for a wide range of events from wedding receptions, exercise classes, concerts, dinners, conferences, celebrations, afternoon tea dances, craft fairs, fashion shows, exhibitions, mother & baby classes and much, much more.

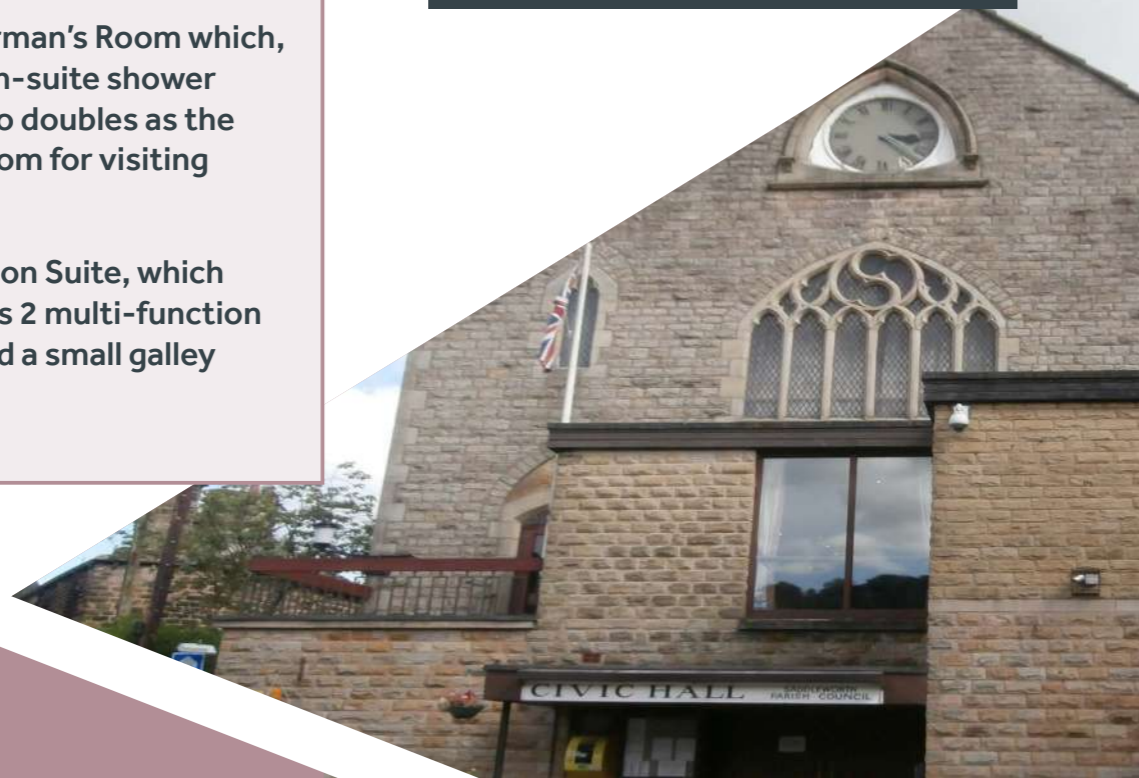
Set out over 3 floors, our building includes:

- The Council Chamber
- Two spacious lower halls, with a catering kitchen
- The Ballroom, including bar and serving kitchen (with dumb waiter access from the catering kitchen)
- The Chairman's Room which, with its en-suite shower room, also doubles as the Green Room for visiting artistes
- The Hudson Suite, which comprises 2 multi-function rooms and a small galley kitchen

The building is licensed for the solemnisation of marriage; wedding ceremonies for up to 90 guests can be comfortably accommodated in the Council Chamber, with larger parties being accommodated in the Ballroom, which is also the perfect backdrop for wedding photography.

There are full disabled facilities and baby changing facilities on both the ground and first floors. Disabled access to the first floor is provided via a lift from the main foyer and by an access ramp from the car park at the rear of the building. Free Wi-Fi is available throughout the building.

A virtual tour of the Civic Hall is available at <https://goo.gl/maps/ZBQ2ZPKLQPw>



THE COUNCIL CHAMBER

HOME TO MONTHLY COUNCIL MEETINGS, OUR COUNCIL CHAMBER IS MOST POPULAR FOR CONFERENCES, LOCAL COMMUNITY GROUP MEETINGS, WORKSHOPS AND WEDDING CEREMONIES.

Perfect for your wedding ceremony, we can provide space for up to 90 guests as well as dressing ceremony chairs in white. You are free to decorate the space as you like, and we can accommodate any music you wish to bring for your special day.

The room is fitted with a hearing loop. A full conference microphone system, projector, screen and laptop computer are available to hire making this room ideal for smaller business conferences of up to 30 people.



THE BALLROOM & BAR

THE IMPRESSIVE BARONIAL STYLE BALLROOM HAS A HIGH, VAULTED CEILING AND BOASTS A BEAUTIFUL TRACERY WINDOW BRINGING A GOTHIC AMBIENCE TO THE HALL.

A large stage and excellent PA system are available. Our fully licensed bar is located in the adjoining room, so you can sit back and relax in a quieter space.

Whilst perfect for wedding receptions, dinners and concerts, the ballroom is also ideal for exhibitions and large conferences.



THE LOWER HALLS & KITCHEN

THE LOWER HALLS ARE PERFECT FOR A CHAMPAGNE AND CANAPE RECEPTION AFTER YOUR WEDDING CEREMONY OR FOR YOUR EVENING BUFFET.

It is also the ideal space to hold any weekly exercise classes, baby and toddler groups, smaller exhibitions and lunches, day or night.

Situated at the rear of the lower hall is a fully equipped catering kitchen with ample preparation space and access to the first floor serving kitchen via a dumb waiter.



FLOOR PLANS AND TECHNICAL INFORMATION

THE BALLROOM

The Ballroom has a fixed stage which measures 9m by 3m. A single or double extension can be added to accommodate larger numbers of performers. Adding the stage extensions reduces the floor area of the main hall. There is fixed seating at the sides of the hall and a balcony at the rear.

The following table sets out the floor areas and the number of people which can be accommodated when using the fixed stage, single extension or double extensions:

	FIXED STAGE	SINGLE EXTENSION	DOUBLE EXTENSION
Stage dimensions	9m x 3m	9m x 4.2m	9m x 5.4m
Ballroom floor dimensions	12m x 16m	12m x 14.8m	12m x 13.6m
Concert seating			
Main hall	325	285	245
Sides	26	26	26
Balcony	102	102	102
TOTAL	453	413	373
Dancing	350	325	300
Seated meals	160 (plus dance floor)	160 (small dance floor)	160 (no dance floor)

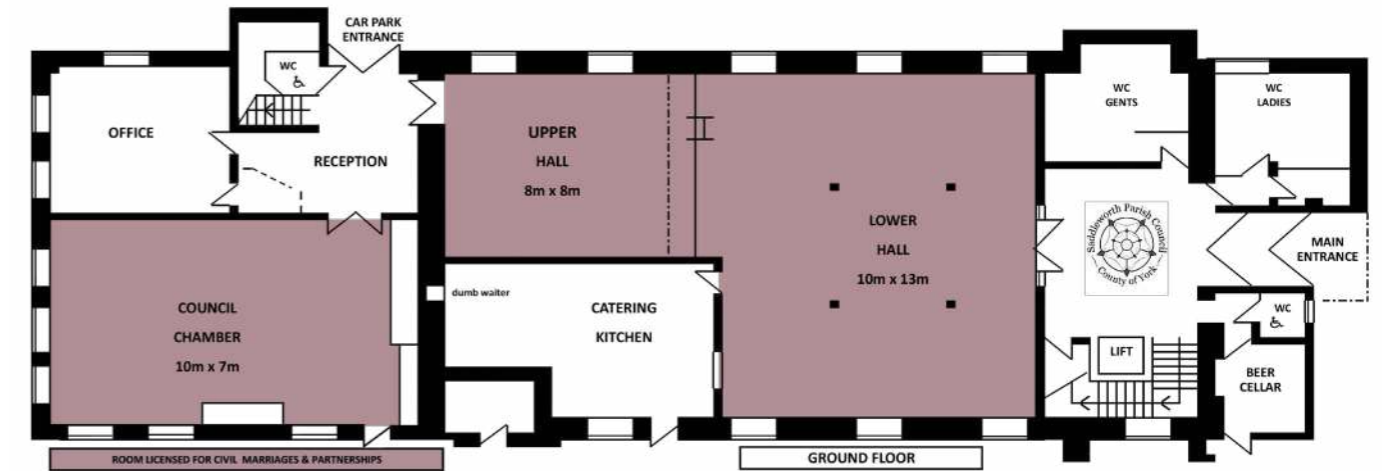
THE LOWER HALLS

Each of the lower halls can accommodate up to 80 seated meals.

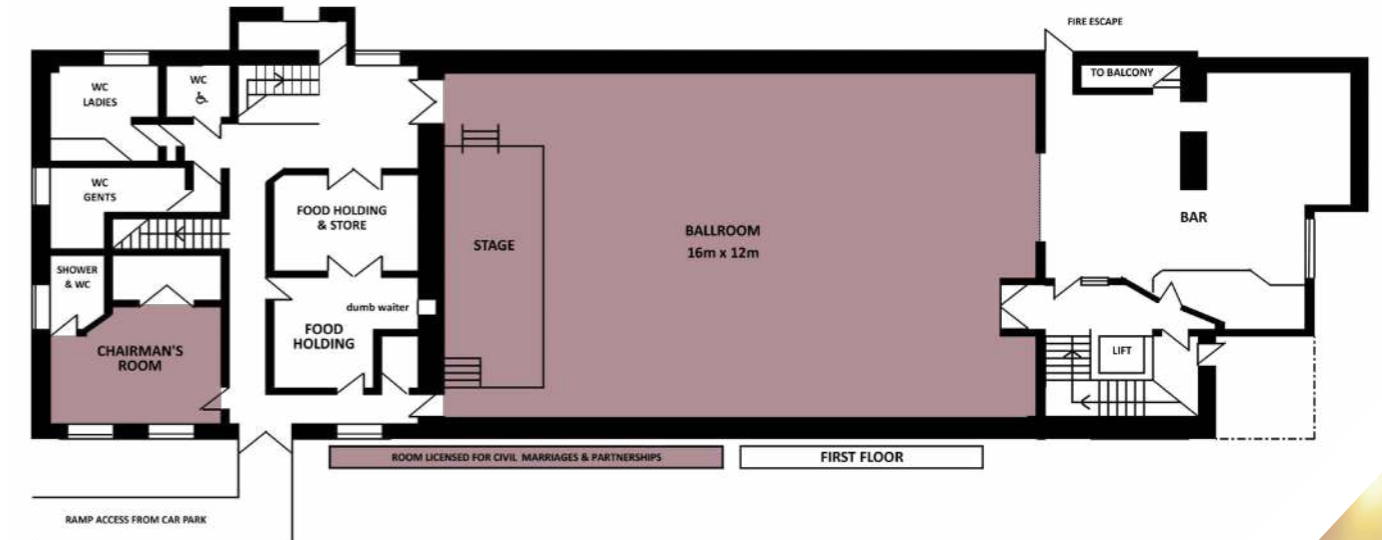
COUNCIL CHAMBER

The Council Chamber can seat up to 90 wedding guests.

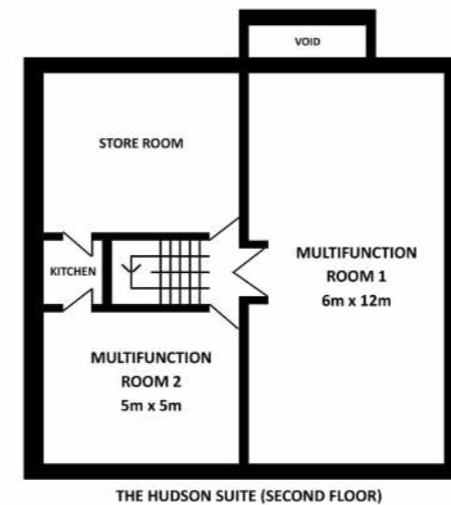
GROUND FLOOR



FIRST FLOOR



THE HUDSON SUITE - SECOND FLOOR



UPPERMILL CIVIC HALL

Lee Street, Uppermill, Saddleworth OL3 6AE
TEL. 01457 876665

enquiries@saddleworthparishcouncil.org.uk
www.saddleworthparishcouncil.org.uk



SADDLEWORTH
Parish Council

